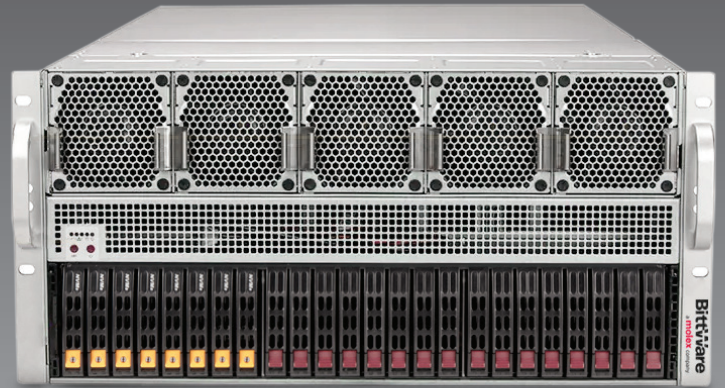


BittWare
a **molex** company

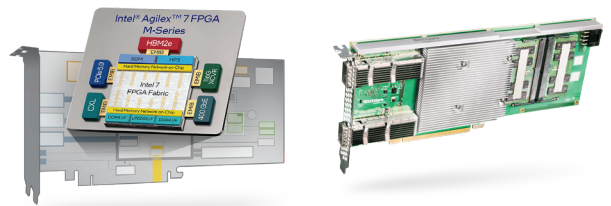
TeraBox 5202S 5U FPGA Server



Up to 10 double-width FPGA Cards

BittWare's TeraBox-5202S offers a 5U, 10 dual-slot chassis supporting Intel's latest 4th Generation Xeon Scalable processors and PCIe Gen5. Configurations include up to 10 of BittWare's double-width cards using Achronix, AMD, or Intel FPGAs.

Users seeking maximum logic/memory density can choose the VectorPath with the Achronix Speedster7t FPGA and high-bandwidth GDDR6 memory or the IA-860m, which features an Intel Agilex FPGA along with QSFP-DDs and yields up to an impressive 30x 400G. No matter which configuration you choose, you're getting BittWare's installation, support, and comprehensive warranty.



Support for up to **10** double-width or **13** single-width FPGA accelerator cards

key features

Up to
40 QSFPs
for 80x 100G or
320x 10/25G

**PCIe
Gen5**

12X Single-Wide
10X Double-Wide
FPGA Cards
Support for BittWare's full
range of FPGA cards

Up to 13 single-width or
10 double-width FPGA
cards

Up to 24x hot-swap
NVMe/SATA/SAS
drive bays

chassis key specs

5U, depth 29 in (737mm)

Processor: 2x Intel® 4th Generation Xeon® Scalable processors

Memory: Up to 32x ECC DDR5-4800 DIMMs

Slots: 10x double-width PCIe Gen5 x16 slots

Storage: Up to 24x 2.5" hot-swap NVMe/SATA/SAS drive bays
(8x 2.5" NVMe dedicated)

Power supply: 2000W, redundant (2+2), Titanium



TeraBox 5202S

5U FPGA Server

The TeraBox 5202S is a 5U FPGA server based on the SuperMicro 521GE-TNRT chassis. This server offers two Intel 4th Generation Xeon Scalable CPUs along with high PCIe slot density. With configurations of up to 10 of BittWare's large double-width cards, this server is an excellent premium option for the 5U form factor.

System Management

For system management, BittWare's FPGA cards are equipped with a Board Management Controller (BMC), which accepts PLDM commands. Use it along with BittWare's Software Development Kit to program the FPGA over USB, monitor card power and temperature, and re-program the onboard clocks. You'll also be able to set points to shut down the card when it gets too hot, access JTAG, or access the software tools remotely.

The TeraBox Advantage

Choosing a TeraBox FPGA server means knowing you are getting a pre-configured and tested solution. This includes setup and installation of your FPGA cards and associated hardware, your choice of operating system, and development tools. Your TeraBox arrives ready for use—giving your team more time for development and deployment.

Server Configuration

Standard

- (2) Intel Xeon Gold 5415+ (2.9 GHz 8Core/16Thread) Processors
- (4) 32GB DDR5-4800 memory modules (128GB)
- (2) 480GB NVMe M.2 Drives
- 2700W Redundant Titanium Power Supplies

Contact BittWare if this configuration is not exactly what you are looking for. BittWare can work with you to come up with a server configuration that suits your exact needs.

To learn more, visit www.BittWare.com

v0 | 2024.03.26

© BittWare 2024

UltraScale+ is a registered trademark of AMD Corp. Agilex is a trademark of Intel Corp. Speedster7t is a trademark of Achronix. All other products are the trademarks or registered trademarks of their respective holders.

BittWare
a **molex** company